



House & Land Package
Design POPLAR 207

3
 3
 2
 207.0sqm
 601sqm

Client: Zeljko Pekic

Lot 6 0 glendoras ACT
123456 macnamara ACT
2617 (Ginninderry)

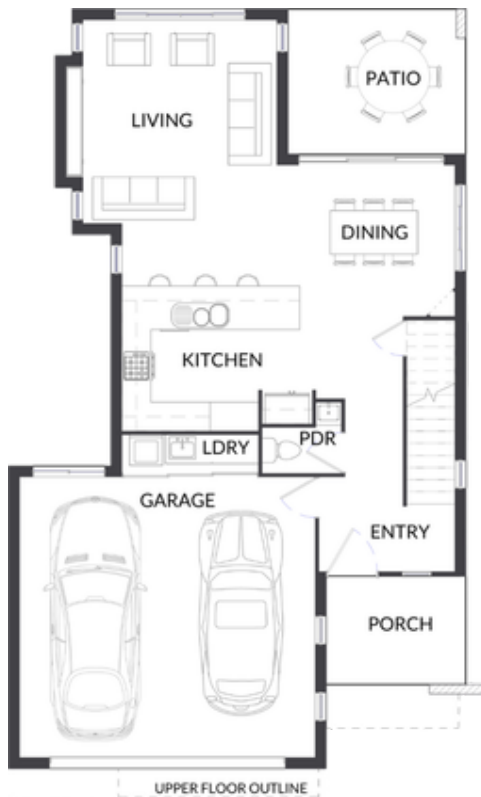
House size 207.0 sqm
Land size 601 sqm
Width 9.84 m Length 16.3 m

Priced from
\$129,990,004*

Poplar is a sophisticated double-storey ABM Homes design in Macnamara, Canberra, offering generous open-plan living, upstairs retreat, and spacious bedrooms perfect for growing families who want modern comfort, versatile spaces, and elevated street appeal.

Internal features
Built-in wardrobes , Gym , Intercom , Dishwasher , Floorboards , Inside spa

External features
Balcony , Deck



Ground Floor



First Floor

* although all due care has been taken in the preparation of this package, specific site conditions and purchaser amendments may change the contract pricing.

