

# HOUSE & LAND PACKAGE

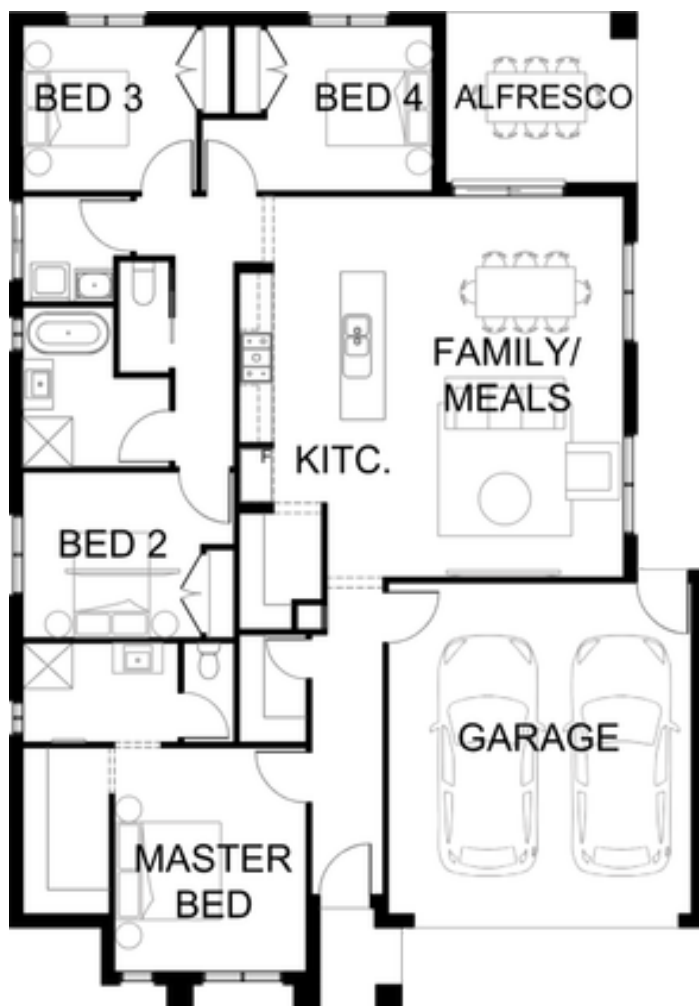


NEW LIVING

GENOA 203 | 203.1sqm

FIXED PRICE

**\$687,180**



Lot 11935 Warralily Estate 1 Armstrong Creek VIC 3217 (Warralily Armstrong Creek)

Lot size 350 sqm

4 2 2

## Package Inclusions

Build your dream home with Victoria's No.1 Home Builder - and start living the lifestyle you've been imagining. The New Living Collection by Sherridon Homes curates an environment where every moment is an opportunity to embrace the beauty of life. A space where you can unwind after a long day, spend quality time with your loved ones, and create memories that last a lifetime. Explore our great value with our New Living Inclusions: " Architectural façade " 3.5kw solar PV system " Colour-through concrete driveway " Colorbond sectional garage door with remote " Gas ducted heating to living and bedrooms " 2590mm ceiling height to ground floor " Quality flooring throughout " 20mm stone benchtops to kitchen, bathroom and ensuite " Kitchen appliances.

VIEW MORE PACKAGES



Beau Huppert 0435123663

sherridonhomes.com.au

Victoria's No.1 Home Builder

\* Pricing based on developer engineering plans, estate guidelines and Plan Of Subdivision. Land availability and pricing supplied by the developer are subject to change without notice. All house & land packages are subject to developer approval. Price does not include Stamp Duty, Government, legal or bank charges. \* Total package price minus \$10K FHOG (subject to SRO eligibility). The First Home Owners Grant is a Government incentive and any claims will be lodged externally. Photographs in this flyer may depict fixtures, finishes and features either not supplied or are upgrade options by Sherridon. Floorplan, facades and photographs are for illustrative purposes only (refer to contract documentation for full details) and may not represent the final product as shown. A new home specialist can provide an exact list of detailed inclusions. Sherridon Homes reserves the right to amend specification and price without notice. VIC Builder's Licence: CDB-11-50029; NSW Contractor licence: 480832C