

A HIGHER STANDARD

VICTORIA'S  
NUMBER 1  
HOME  
BUILDER

## SUBIC 133

Range: Simplicity • Facade: Contemporary

251sqm 133sqm

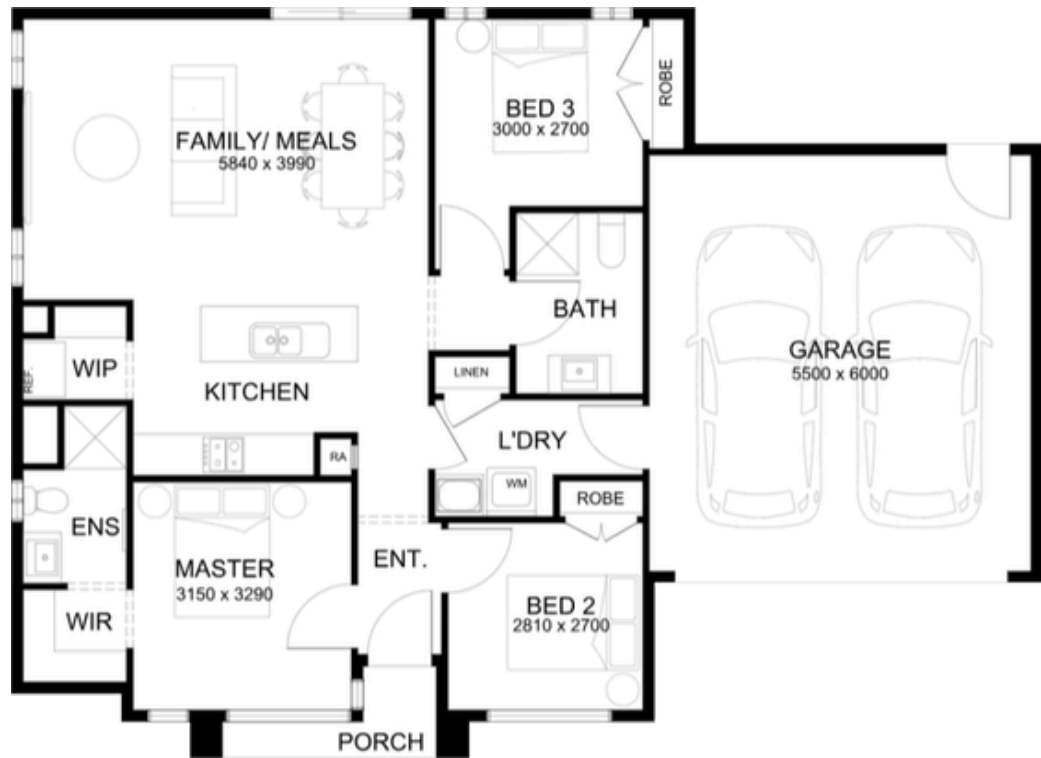
24 Cassowary Way  
Winter Valley VIC 3358

## House & Land Package

Priced from

**\$470,838**

- ✓ Architectural façade
- ✓ 3.5kw solar PV system
- ✓ Colour on concrete driveway (up to 36m<sup>2</sup>)
- ✓ Colorbond sectional garage door
- ✓ 3.5kw split system to living area
- ✓ 2590mm ceiling height to ground floor
- ✓ Quality flooring throughout
- ✓ Block out roller blinds
- ✓ 20mm stone benchtops to kitchen, bathroom & ensuite
- ✓ Kitchen appliances, including oven, cooktop, canopy rangehood & dishwasher
- ✓ Tiled splashback to kitchen
- ✓ Ceramic tiled shower base in ensuite & bathroom
- ✓ Downlights throughout
- ✓ 7 star energy rating



**CARRINGUM**  
BALLARAT

BB

**Bahnam Butrus**  
bahnam@sherridonthomes.com.au  
0472773884

Pricing based on developer engineering plans, estate guidelines and Plan Of Subdivision. Land availability and pricing supplied by the developer are subject to change without notice. All house & land packages are subject to developer approval. Price does not include Stamp Duty, Government, legal or bank charges. \*Total package price minus \$10K FHOG (subject to SRO eligibility). The First Home Owners Grant is a Government incentive and any claims will be lodged externally. Photographs in this flyer may depict fixtures, finishes and features either not supplied or are upgrade options by Sherridon. Floorplan, facades and photographs are for illustrative purposes only (refer to contract documentation for full details) and may not represent the final product as shown. A new home specialist can provide an exact list of detailed inclusions. Sherridon Homes reserves the right to amend specification and price without notice. VIC Builder's Licence: CDB-U 50039v NSW Contractor licence 480633C