

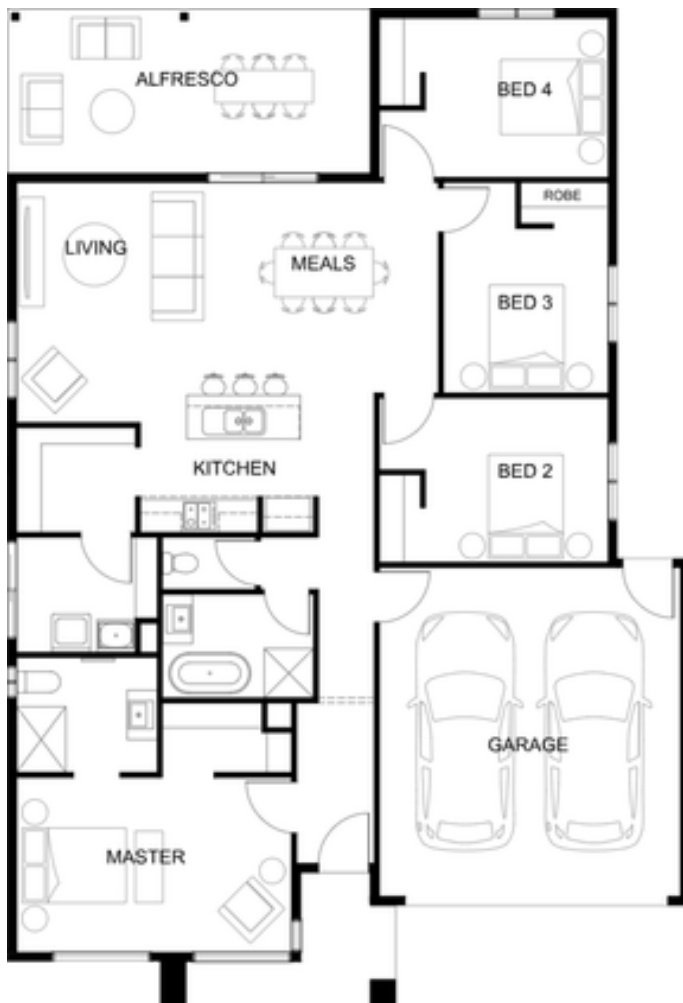


SIMPLICITY

**LENOX 201** | 22sq

FIXED PRICE

**\$706,040\***



**Lot 628 Shade St, Maple Grove,  
Pakenham**

**Lot size 350 sqm**

**4** **2** **2**

**Package Inclusions**

- Architectural façade
- 3.5kw solar PV system
- Colour on concrete driveway (up to 36m2)
- Colorbond sectional garage door
- 3.5kw split system to living area
- 2590mm ceiling height to ground floor
- Quality flooring throughout
- Block out roller blinds
- 20mm stone benchtops to kitchen, bathroom & ensuite
- Kitchen appliances, including oven, cooktop, canopy rangehood & dishwasher
- Tiled splashback to kitchen

VIEW MORE PACKAGES

