

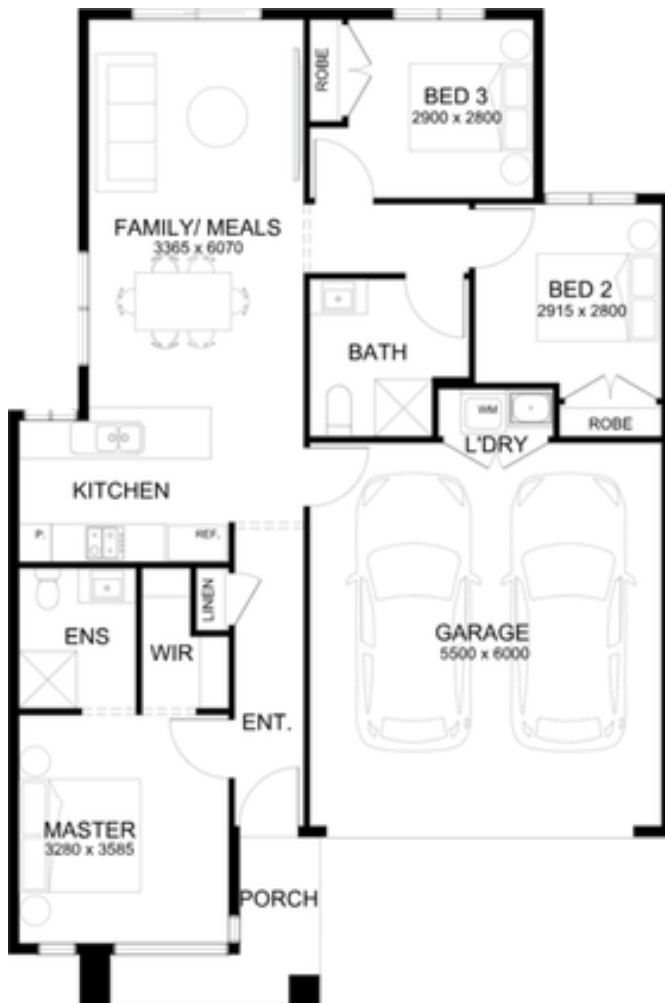


SIMPLICITY

NORWOOD 134 | 14sq

FIXED PRICE

\$553,084*



Lot 830 Paver Rd, Maple Grove, Pakenham

Lot size 219 sqm

3 **2** **2**

Package Inclusions

- Fixed price site costs
- Developer and council requirements
- Colour on concrete driveway (up to 36m2)
- Colorbond sectional garage door with remote
- 3.5kw split system to living area
- Block out blinds
- 2590mm ceiling height to ground floor
- 20mm stone benchtops to kitchen, bathroom and ensuite
- Kitchen appliances, including oven, cooktop, canopy rangehood and dishwasher
- Overhead cabinetry to kitchen
- Downlights throughout

VIEW MORE PACKAGES



1300 188 668

sherridonhomes.com.au

Victoria's No.1 Home Builder

* Pricing is based on developer engineering plans, estate guidelines and plan of subdivision. Land prices and availability must be confirmed with the developer prior to purchase. All house and land packages are subject to developer approval. Sherridon Homes reserves the right to amend specification and price without notice. Price does not include any stamp duty, government, legal or bank charges. *Total package price minus \$10K FHOG if applicable (subject to SRO eligibility). The First Home Owners Grant is a government incentive and any claims will be lodged externally. All floorplan, facade images and photographs have been used for illustrative purposes only (refer to contract documentation for full details) and may not represent the final product as shown. Pricing may include relevant promotions and upgrade packs. Please refer to your friendly New Home Consultant for an exact list of inclusions with detail. VIC Builder's Licence: CDB-U 50039, Regional VIC Builder's License CDB-U 101150