

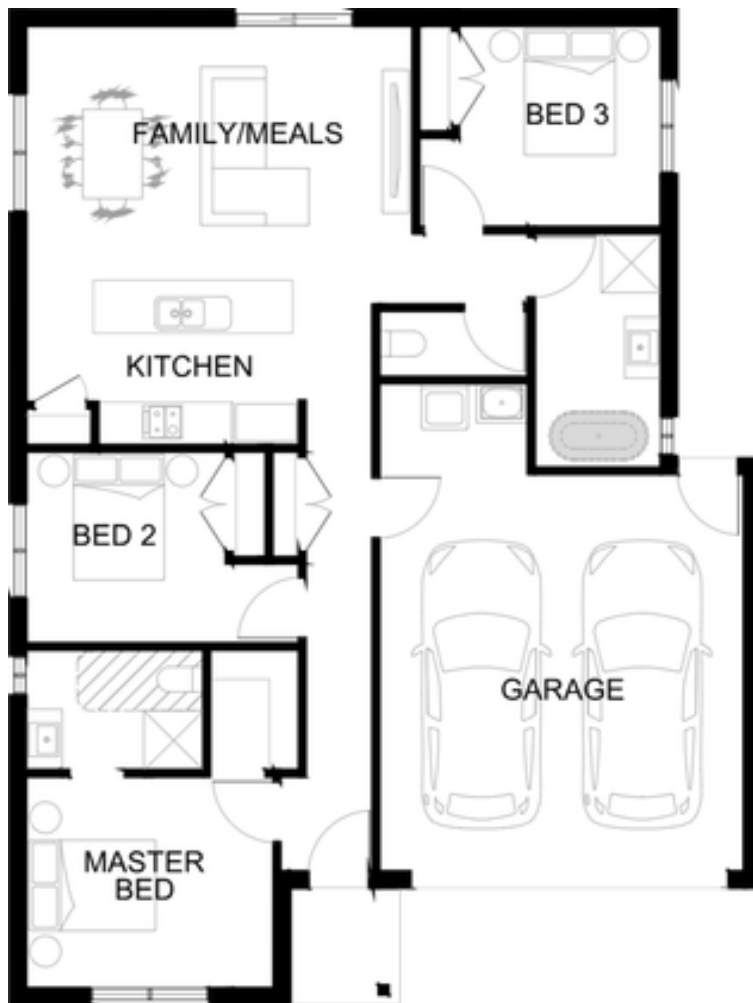


ESSENCE

CRESWICK 152 | 16sq

FIXED PRICE

\$568,000*



**Lot 107 Parkers Grove, Parkers Grove
Shepparton, Shepparton**
Lot size 400 sqm

3 2 2

Package Inclusions

- ! * Site cost Allowance
- ! * 7 Star Energy Rating
- ! * Min 3.5KW solar system
- ! * 2590mm Ceiling Height
- ! * Colorbond Roof
- ! * 20mm Stone Benchtops to Kitchen, Bathroom and Ensuite
- ! * Mixer Tapware throughout
- ! * 900mm Omega Appliances and Dishwasher
- ! * Free standing bath to Bathroom
- ! * Tiled Shower Bases
- ! * Remote Control Garage Panel Lift Door
- ! * Roller Blinds Throughout
- ! * Color Through Concrete Driveway (up to 35m²)

VIEW MORE PACKAGES



Parkers Grove

* Fixed Price Current As Of 17/02/2026. Fixed Pricing Is Based On Developer Engineering Plans, Estate Guidelines And Plan Of Subdivision. Land Availability And Pricing Supplied By The Developer Are Subject To Change Without Notice. All House And Land Packages Are Subject To Developer Approval. Price Does Not Include Any Stamp Duty, Government, Legal Or Bank Charges. Photographs In This Flyer May Depict Fixtures, Finishes And Features Either Not Supplied Or Are Upgrade Options By Sherridon. All Floorplan, Facade Images And Photographs Have Been Used For Illustrative Purposes Only (Refer To Contract Documentation For Full Details) And May Not Represent The Final Product As Shown. Please Refer To Your Friendly New Home Consultant For An Exact List Of Inclusions With Detail. Sherridon Homes Reserves The Right To Amend Specification And Price Without Notice. VIC Builder's Licence: CDB-U 50039v NSW Contractor licence 480633C