

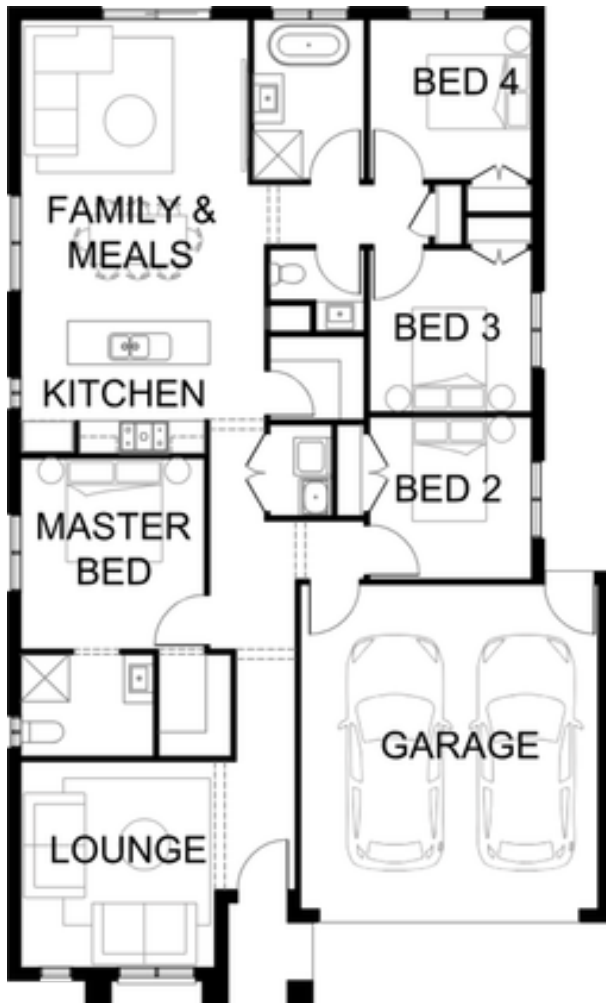


NEW LIVING

ALDEN 183 | 20sq

FIXED PRICE

\$711,945*



**Lot 1023 Jackpot St, WestWood Place,
Fraser Rise**

Lot size 373 sqm

4 2 2

Package Inclusions

- Fixed price site costs
- Developer and council requirements
- Colour-through concrete driveway
- Colorbond sectional garage door with remote
- 2740mm ceiling height to ground floor
- 40mm stone benchtops to kitchen
- Kitchen appliances, including oven, cooktop, canopy rangehood and dishwasher
- Double bowl undermount sink
- Overhead cupboards above fridge space
- Ceramic tiled shower base in ensuite and bathroom
- Downlights throughout

VIEW MORE PACKAGES



* Pricing is based on developer engineering plans, estate guidelines and plan of subdivision. Land prices and availability must be confirmed with the developer prior to purchase. All house and land packages are subject to developer approval. Sherridon Homes reserves the right to amend specification and price without notice. Price does not include any stamp duty, government, legal or bank charges. *Total package price minus \$10K FHOG if applicable (subject to SRO eligibility). The First Home Owners Grant is a government incentive and any claims will be lodged externally. All floorplan, facade images and photographs have been used for illustrative purposes only (refer to contract documentation for full details) and may not represent the final product as shown. Pricing may include relevant promotions and upgrade packs. Please refer to your friendly New Home Consultant for an exact list of inclusions with detail. VIC Builder's Licence: CDB-U 50039, Regional VIC Builder's License CDB-U 101150