



**SIMPLICITY**

**SUBIC 185 | 20sq**

FROM PRICE

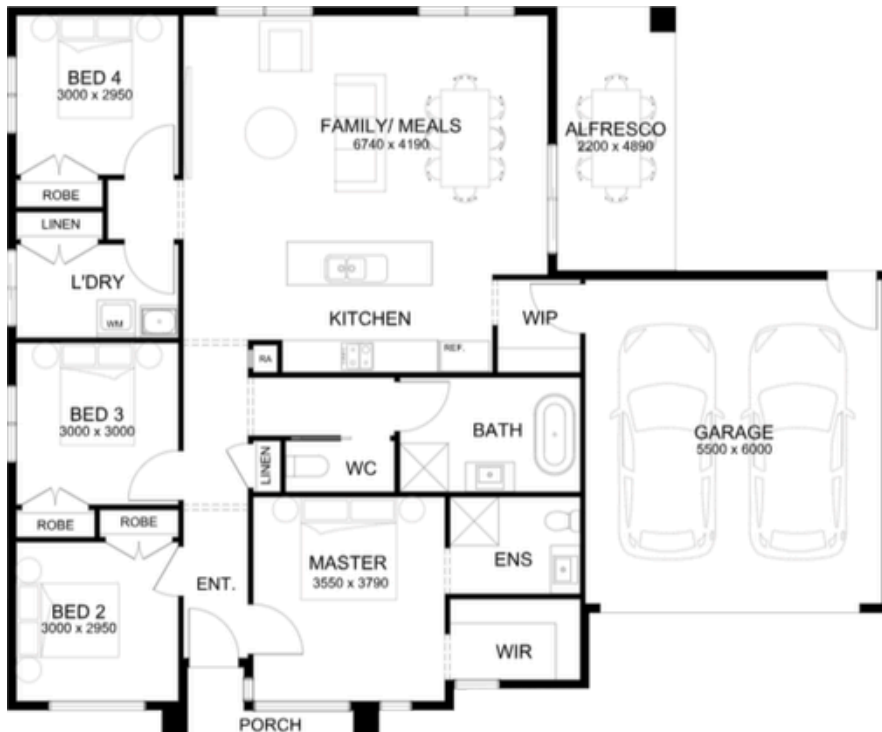
**\$644,290\***

**Lot 266 Darling Street, Warragul  
Crownlea, Warragul  
Lot size 520 sqm**

**4** **2** **2**

**Package Inclusions**

- Colour through concrete driveway (up to 36m<sup>2</sup>)
- 2590mm ceiling height to ground floor
- 3.5kw split system to living area
- 20mm Caesarstone stone benchtops to kitchen, bathroom and ensuite
- Colorbond sectional garage door with remote
- Quality flooring throughout
- Block out roller blinds throughout
- Kitchen appliances, including oven, cooktop, canopy rangehood and dishwasher
- Overhead cabinetry to kitchen
- Tiled splashback to kitchen
- Downlights throughout



VIEW MORE PACKAGES



\* Fixed Price Current As Of 17/02/2026. Fixed Pricing Is Based On Developer Engineering Plans, Estate Guidelines And Plan Of Subdivision. Land Availability And Pricing Supplied By The Developer Are Subject To Change Without Notice. All House And Land Packages Are Subject To Developer Approval. Price Does Not Include Any Stamp Duty, Government, Legal Or Bank Charges. Photographs In This Flyer May Depict Fixtures, Finishes And Features Either Not Supplied Or Are Upgrade Options By Sherridon. All Floorplan, Facade Images And Photographs Have Been Used For Illustrative Purposes Only (Refer To Contract Documentation For Full Details) And May Not Represent The Final Product As Shown. Please Refer To Your Friendly New Home Consultant For An Exact List Of Inclusions With Detail. Sherridon Homes Reserves The Right To Amend Specification And Price Without Notice. VIC Builder's Licence: CDB-U 50039v NSW Contractor licence 480633C